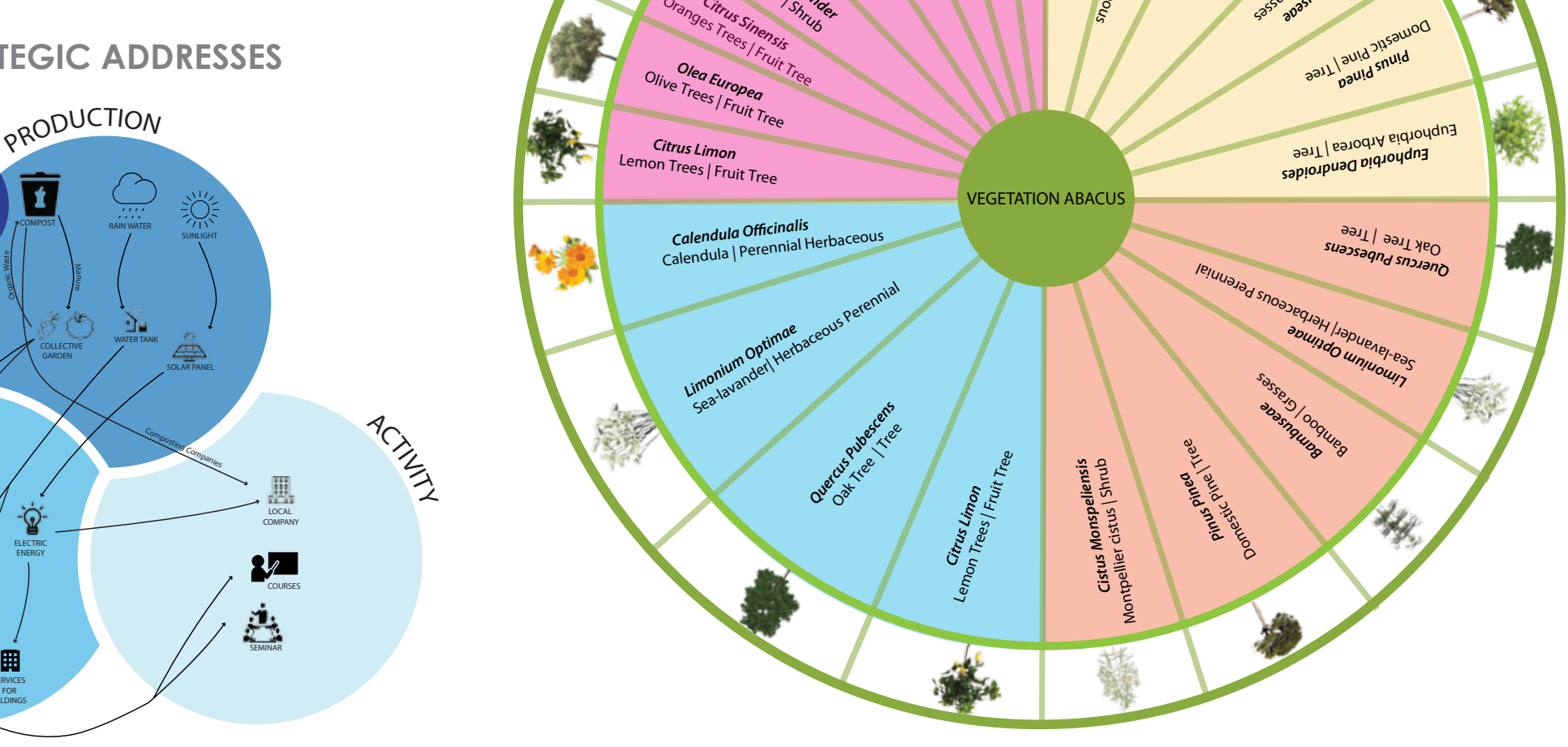
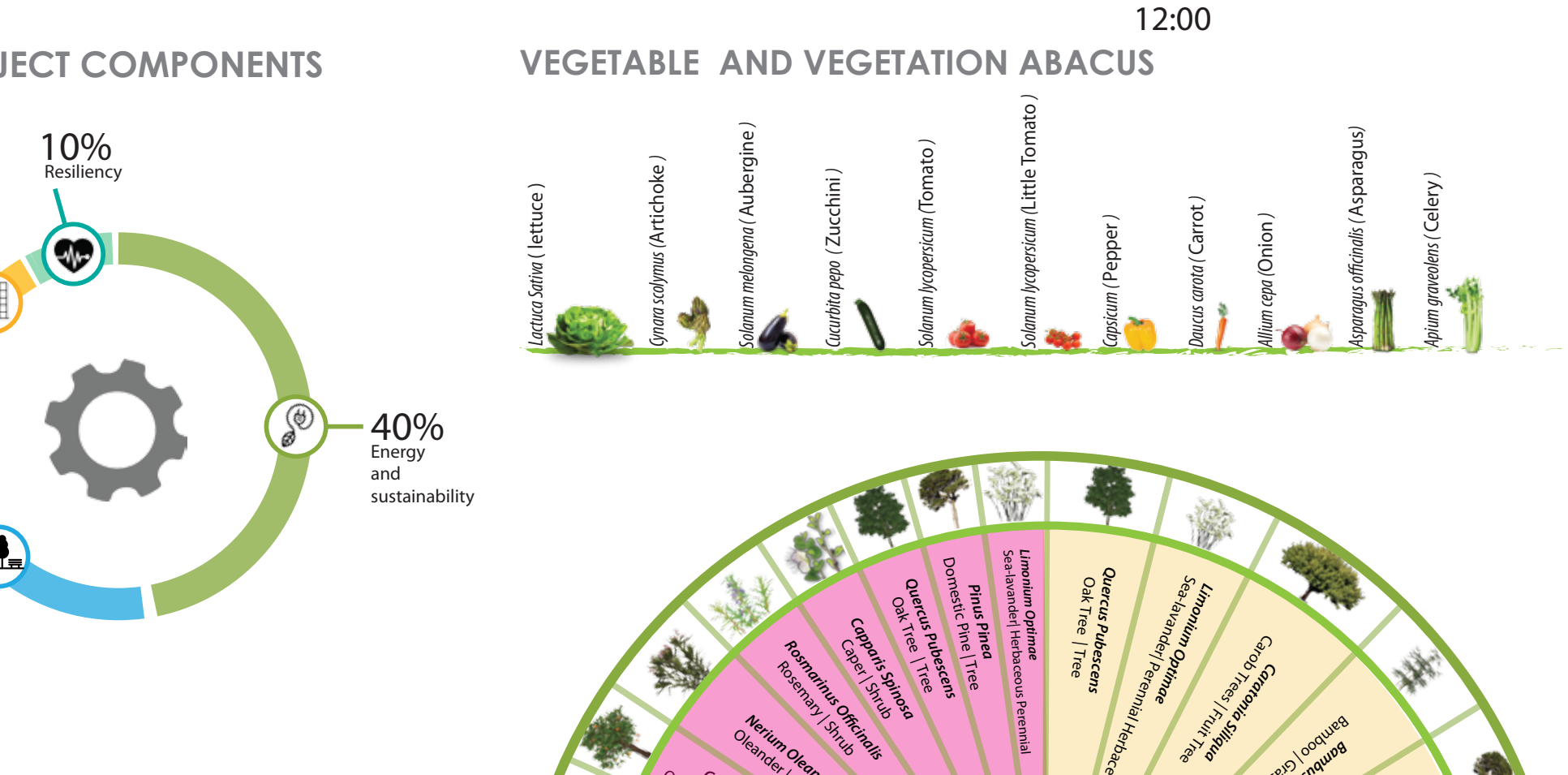
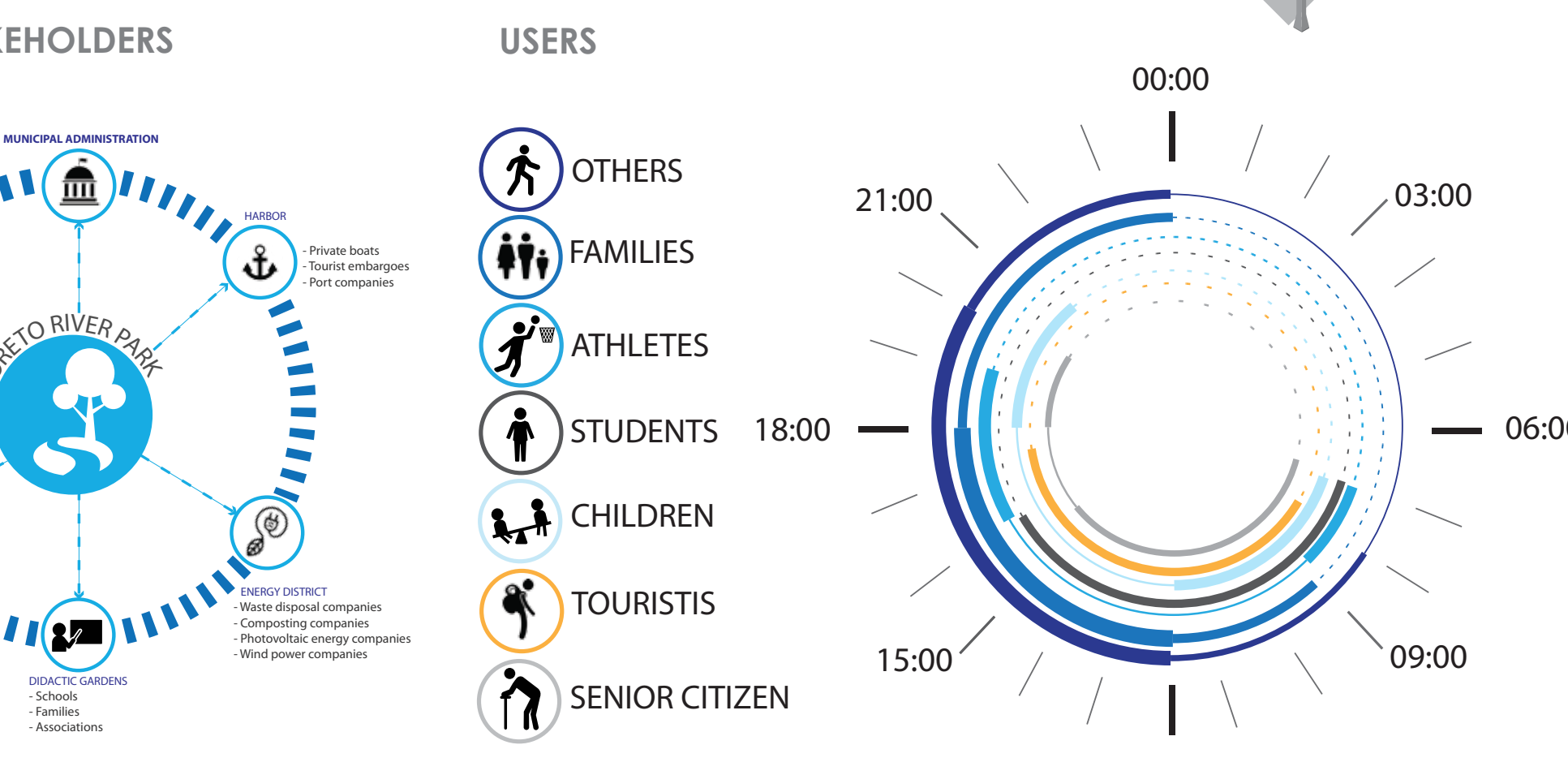
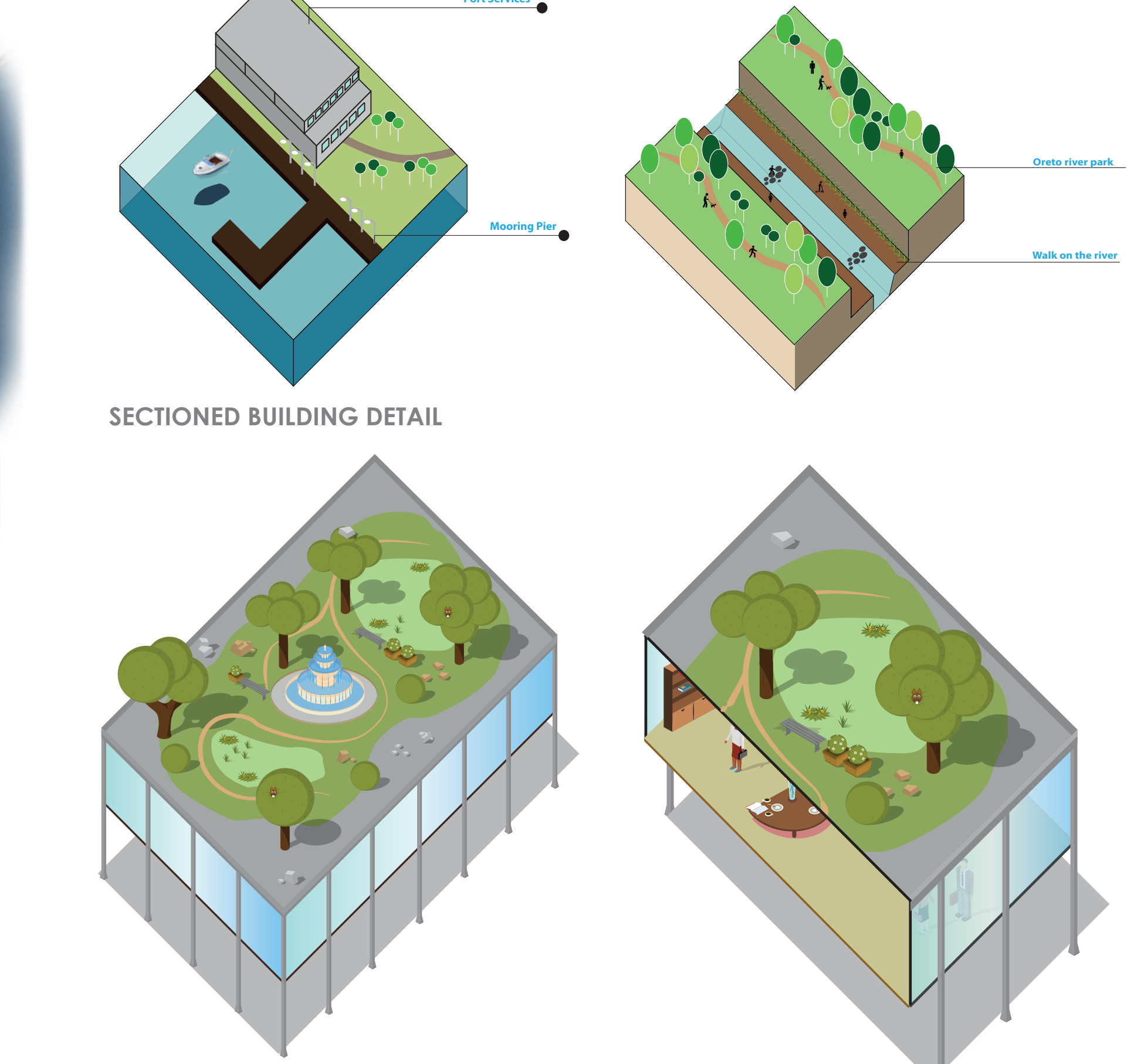
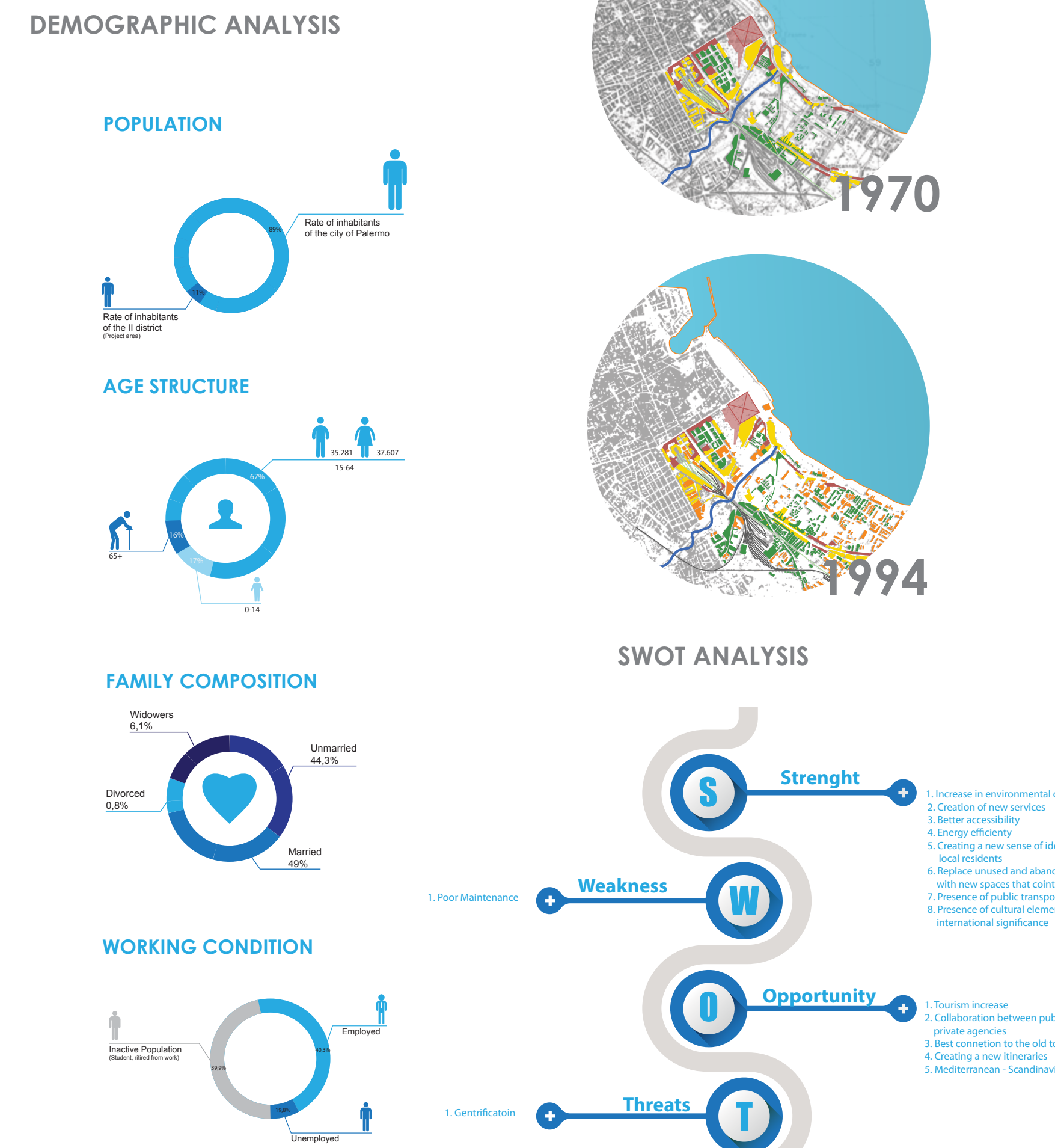
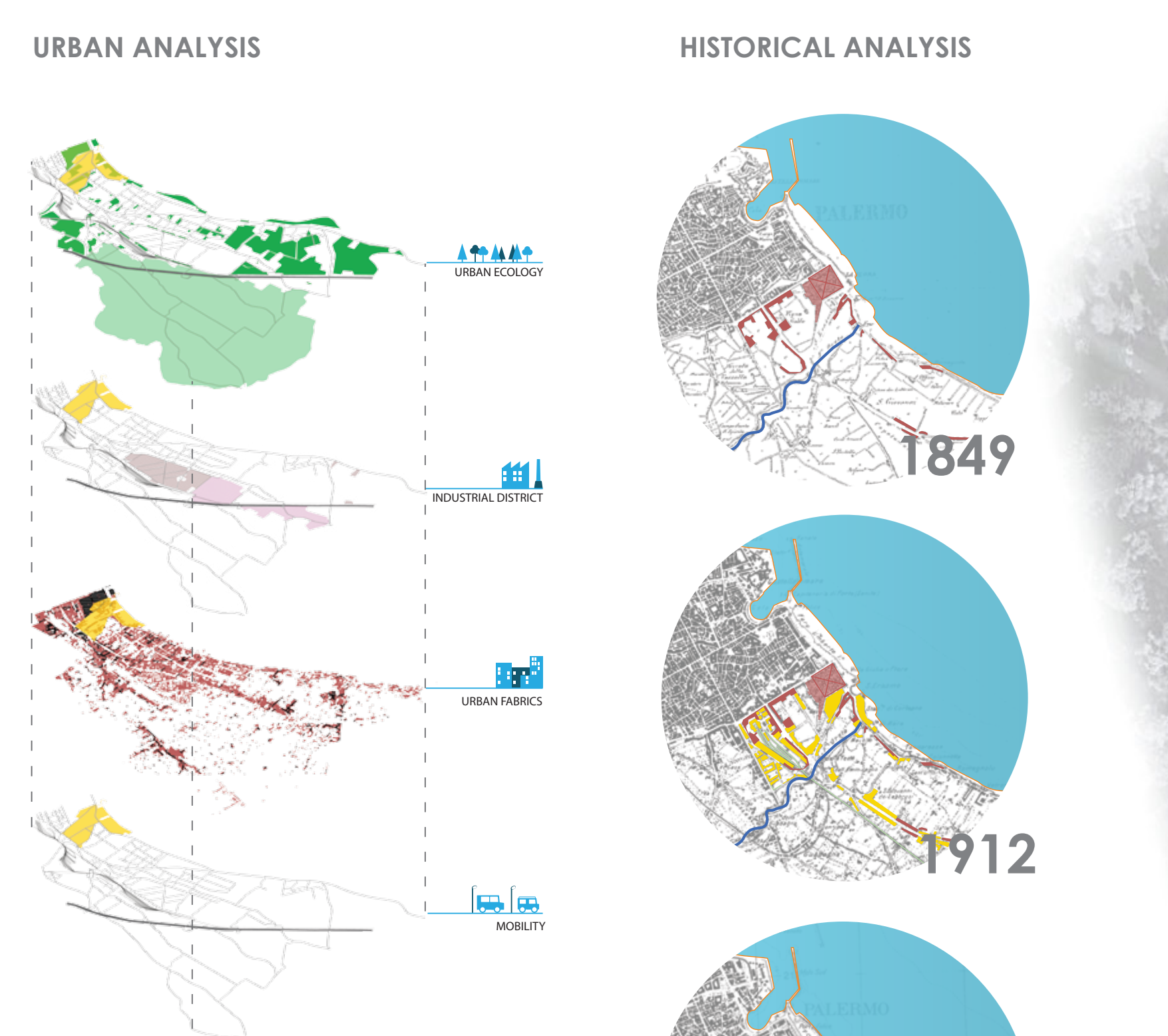
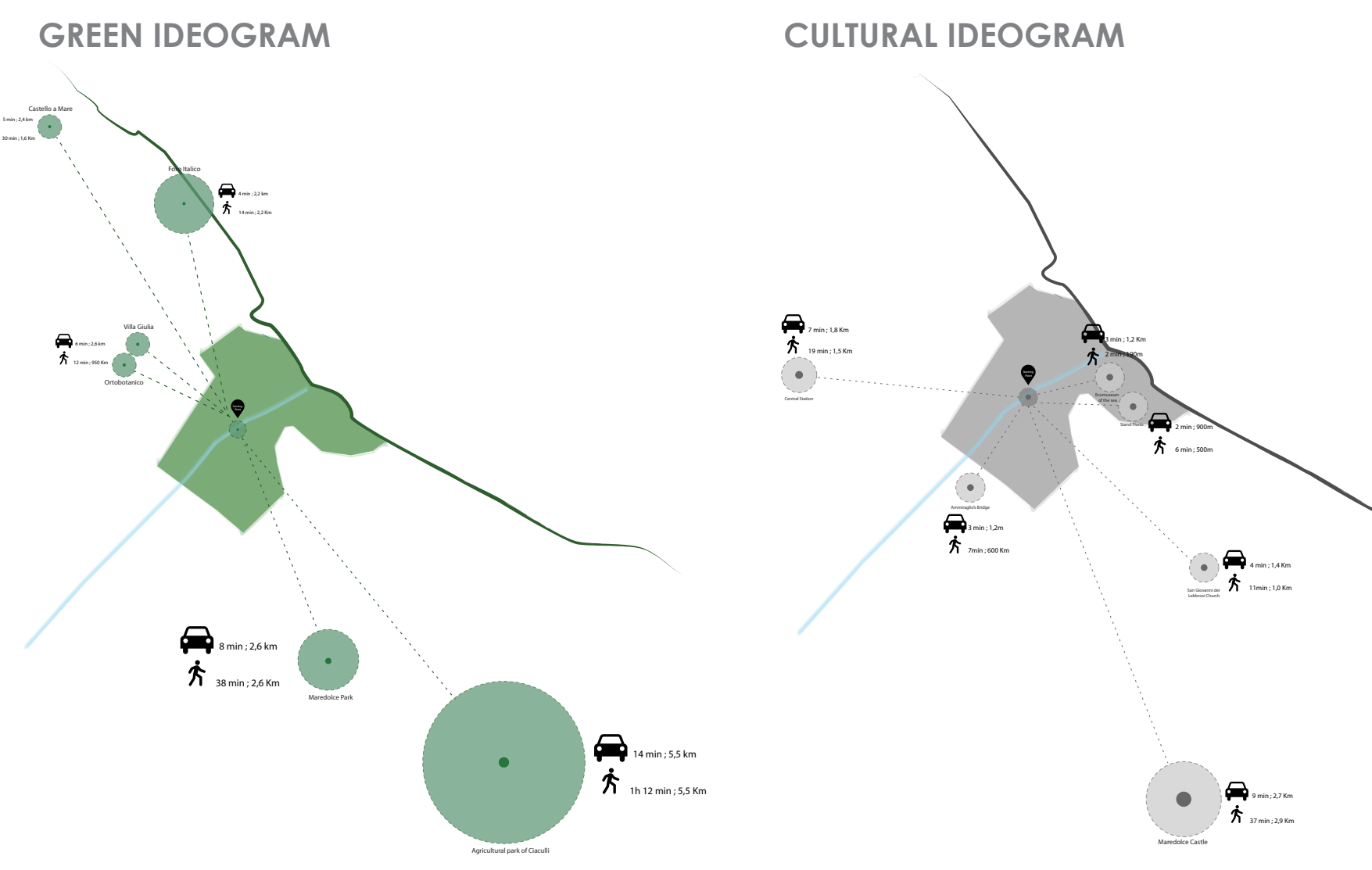
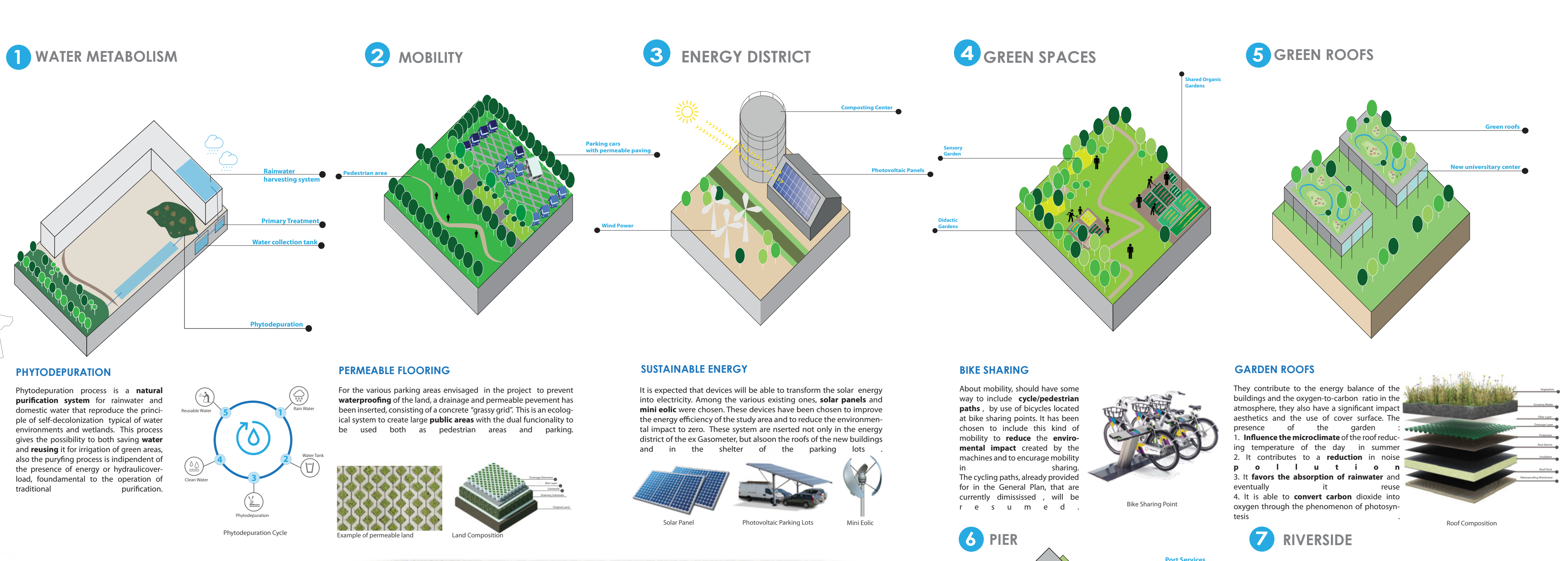


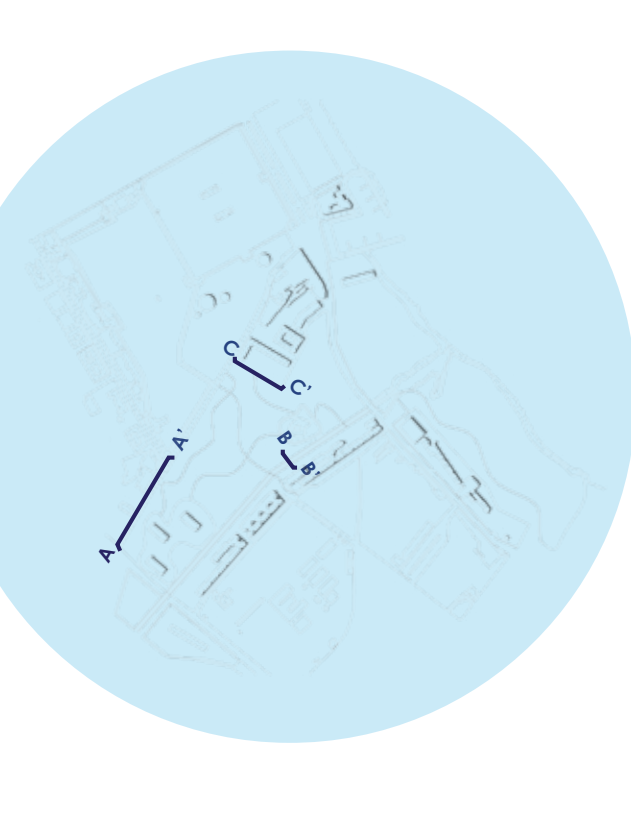
The project area is located in the second district of Palermo, near the coast of the city, capital of Sicily. We chose to operate in this area following topics related to energy, sustainability and environment regeneration, key themes for a contemporary city and equally important to transform a territory crossed by a river, albeit modest, in our case study. Starting from this point our project aim for the environment recovery of the area in addition to the recovery and re-naturalization of the river, its banks and mouth, the project considers the introduction of new mediterranean shared gardens and orchards planned terranean that would allow the residents to produce their favorite agricultural products, in order to encourage their enjoyment of the park. It must be underlined that the water used for irrigation is fueled by various phytodepuration cycles, processes that allow the reuse of rainwater collected into tanks with the purpose to reduce the use of fresh water. One of the most important choices of the project is to include few buildings (more precisely four) each one with no more than 4/5 elevations above ground, in order to cause a strong environmental impact, the last floors in particular are enriched by green roofs, spaces capable to absorb the intense vehicular traffic known to help reduce the effects of pollution. The entire area and giving you the opportunity to walk on foot or using bike sharing points.

**TECHNOLOGICAL DEVICES**

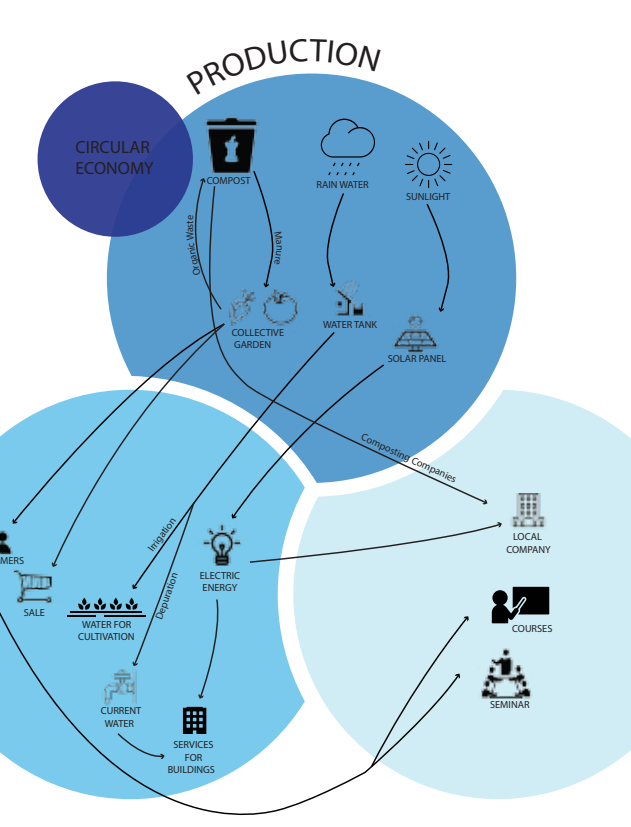


URBANISTIC STANDARD	EXPECTED STANDARD	SQUARE METERS
<b>E</b> EQUIPPED GREEN	7,00 mq / ab	8,685 mq / ab
<b>P</b> PARKING LOTS	9,00 mq / ab	241,25 mq / ab
<b>E</b> EQUIPEMENT	2,00 mq / ab	1,930 mq / ab
<b>E</b> EDUCATION	4,50 mq / ab	6,755 mq / ab

KEYPLAN OF SECTIONS



STRATEGIC ADDRESSES



1:2.000