



Aciri is an urbanized center located 720 meters above sea level. The most substantial part of the Aciri territory is overlooked by the Sita Greca, the other part narrows itself on the Presa's Coast. The city spreads over three hills, the old district is Peda, with the civic tower known as "rocca dei frati" and the main church of Santa Maria Maggiore. Picciò (Greek district) and Oiklidia district climb to the top of the ancient castle, a fortress set in defiance of the deep valley of the Mucone and Chalamo rivers. The heraldic symbol of Aciri are three mountains, topped by three stars, on which there's the sentence "Aciri, Tu Veres, Monti, Ferriti, UA. (Universitas Acirinae)".

Survey

Topology of TU-ATU (Unità Territoriale Urbana) - Existing productive Territory

Refined criteria from a minimum of 0 to a maximum of 2	Values
Presence of infrastructures, infrastructure networks, subsoil	0,7
Presence of architectural heritage	0,03
Environmental Heritage	0,4
Attraction of land	0,1
Ownership unbundling	0,05
Presence or closeness of constraints	0,5
Physical contiguity with existing establishments	0,79
Hydro-geological characteristics of land	0,5
TOTAL	2,4
Average	0,3

Dimensional data of ATU
Area: 228.740 m²
Perimeter: 2.900 m

Present environmental regimes

- Landscape-environmental constraint (D. Lgs. n.4/2004, L. n. 23/98); rivers, creeks and streams for a 150m strip (art. 142, lett. c, art. 44, c. 4, c)
- Constraints PIR - Calabria region (L. N. 183/89, D. L. 180/98) landslide area P3 and P4 lands at risk of landslide P4

The implementing rules
Subparagraph 2 - art. 53 RU

Implementation procedure
The PSC identifies specific policies for them in order to ensure the improvement of rural quality and the recovery of existing sites and those with environmental concerns.

Expected interventions

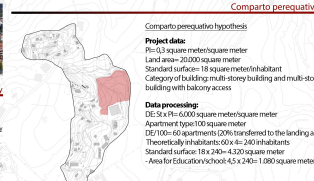
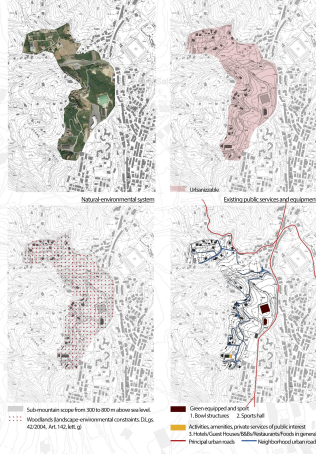
- Realization of equipment and production facilities such as industrial, crafts or storage;
- Realization of the necessary works of depreciation and waste disposal;
- Enhancement of existing municipal infrastructures;
- Realization of offices and structures for the day-to-day work of the staff.

Current Destination
Urbanized urbanizable

Current PSC destination
D. E.



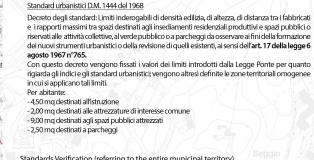
ATU Existing productive Territory
They are compartments subdivided into productive and/or commercial destination where there are both direct construction interventions and interventions subordinate to PMU approval. These areas are divided into various subfields.



Standard urbanistic (DM. 1444 del 1/06)
Decreto dei standard L. in m. indivisibili di durata edifica, di altezza, di distanza tra i fabbricati e i rapporti massimi tra spazi destinati agli insediamenti residenziali produttivi e spazi pubblici o riservati alle attività collettive, al verde pubblico e a parcheggi da osservare al fine della formazione dei nuovi strumenti urbanistici o della revisione di quelli esistenti, ai sensi dell'art. 17 della legge 6 agosto 1967 n. 765.

Con questo decreto vengono fissati i valori dei limiti introdotti dalla Legge Ponte per quanto riguarda gli indici di standard urbanistici vengono altresì definite le zone territoriali omogenee in cui si applicano tali limiti.

Per abitanti:
- 420 mq destinati all'edilizia
- 200 mq destinati alle attrezzature di interesse comune
- 900 mq destinati agli spazi pubblici attrezzati
- 250 mq destinati a parcheggio



Standards Verification (referring to the entire municipal territory)

STANDARDS VERIFICATION ATU according to the DM. 1444/68 art. 3-4

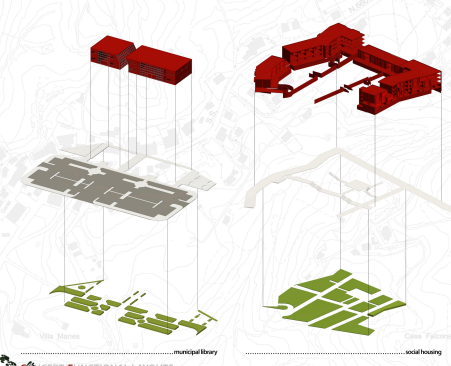
Green	Standard DM. 1444/68 art. 3-4	Existing standard	Theoretical standard	Excess / Deficiency
Green equipped	9 mq/ab	0	2.164 mq	- 2.164 mq
Instruction compulsory	4,5 mq/ab	0	108 mq	- 108 mq
Common interest	2,5 mq/ab	0	480 mq	- 480 mq
Parking lots	2 mq/ab	0	600 mq	- 600 mq
TOTAL	18 mq/ab	0	3.348 mq	

AcReVil, the slogan of the project, is a pun since the second in it, 'evil', is a speculative writing, as it is defined backwards defines the real meaning: "live, live, live..."

The project is a social housing initiative aimed at the design of an urban space and the organic planning of land-related modifications included in the city, its components of invention, space building, and architectural form. An urban architectural organization able to re-emerge identity values on the landscape, morphological and cultural level. The design proposal has identified two levels of intervention: one in the neighborhood of the urban area, and one locale for the single batch of intervention.

The neighborhood scale is concerned with the development of a system of public spaces, in particular the creation of new local centralities, of "local and urban" services, as well as of collective spaces, and therefore of residing areas and green spaces. Facilities are planned to be specifically designed to meet the categories of vulnerable users, such as the elderly, children and the disabled, and to create interactions between different types of users with the aim of building a rich and diversified urban fabric, and to meet the needs of daily activities and neighborhood socialities.

Instead, the local scale focuses on the relationship between the individual social housing intervention and the common spaces of residence, common spaces and coordination with the public space adjacent to the intervention. The aim is therefore to realize urban and residential nuclei that enrich the provision of services for new settlements and communities, and which represent the exchange ground with the neighborhood.



LOCATION



SOCIAL HOUSING'S PLANS

