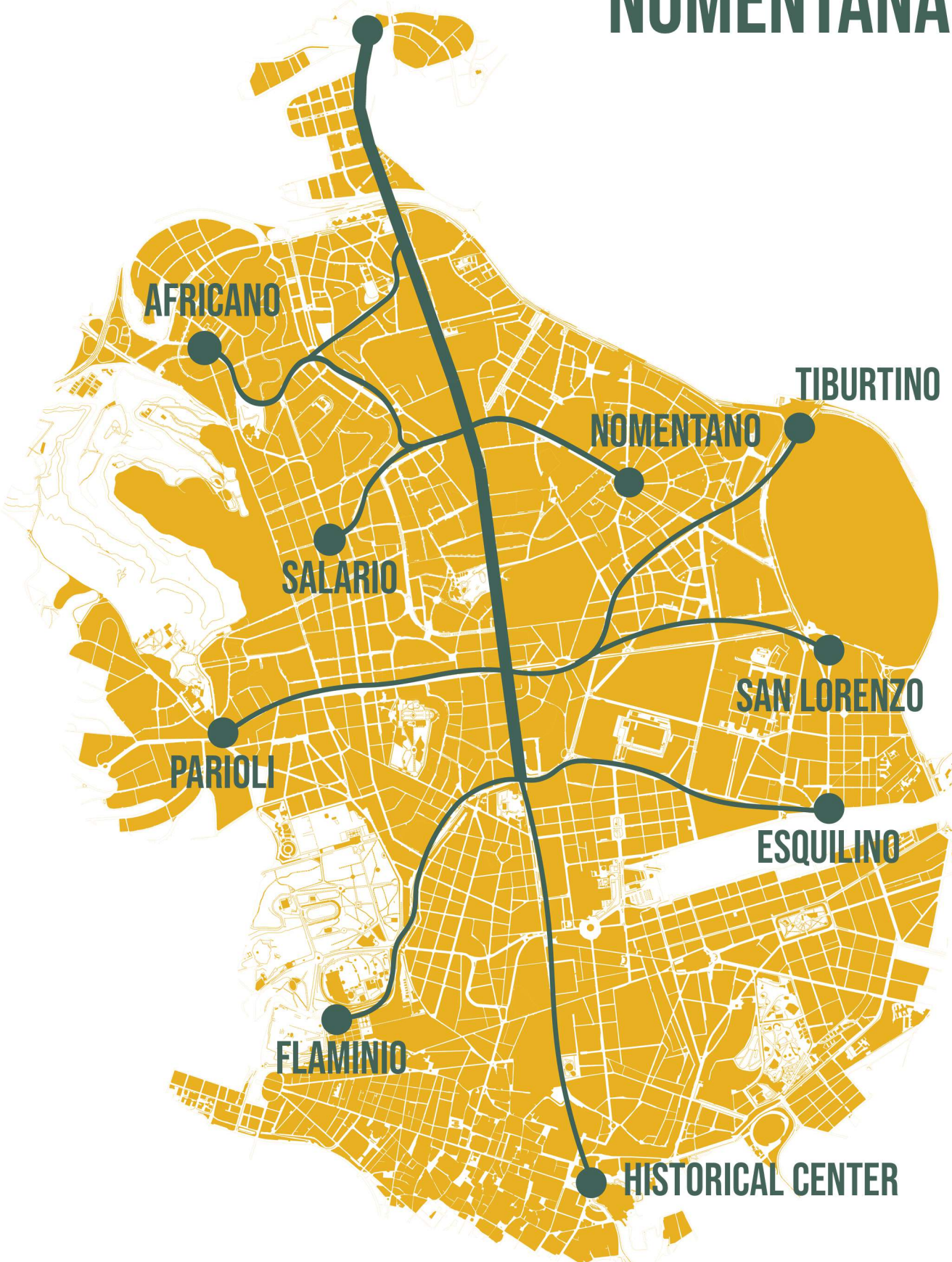


NEIGHBORHOODS AROUND NOMENTANA



MAIN ATTRACTIONS ALONG NONENTANA



THEMATICAL AXES ACROSS NONENTANA



THE RAMBLA

BEFORE



AFTER

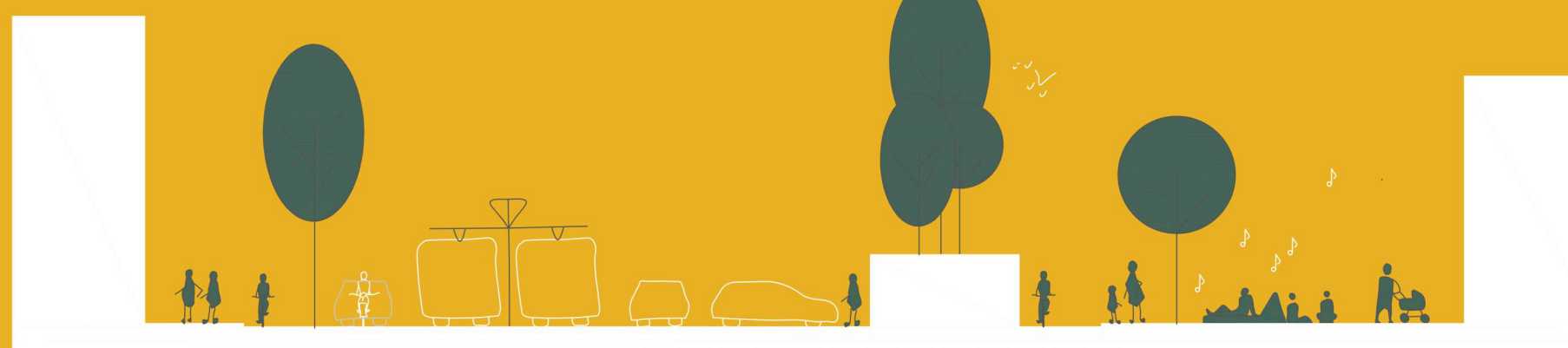


COMMUNITY SPOTS

BEFORE



AFTER



URBAN PARK

BEFORE



AFTER



TREE-LINED PROMENADE

BEFORE



AFTER



UrbanMat is conceived as a "city-roller" that spreads linearly for 4.2 kms from the city center to the suburbs along the Via Nomentana, one of Rome's historical "consolare". Promoting **soft mobility**, the first step consists in reducing the number of vehicles lanes and introducing bike lanes all along the street to prioritise the use of bicycles, shared cars and public transportation. To get rid of the idea of a passing through street that denies the potential that the street could express for the neighbourhoods to which it belongs, UrbanMat proposes various **recreation spots**, places stimulating people to gather and reappropriate the public space. By alternating transit stops, like the **community spots**, and pedestrian paths, like the **Rambla**, the project suggests a new use of urban spaces modifying the urban vision from a big scale to a local one. Benefitting from the presence of several green areas in the sector, the project includes a tunnel conceived to bury a section of the street creating a **connection and continuity** between the parks Villa Torlonia and Villa Paganini reducing both smog and acoustic pollution. Focusing on different approaches of **sustainability**, the project includes various community gardens distributed along the avenue as in the historical places of Piazza Sempione and Porta Pia in order to stimulate the production of local food and support the economy of the neighbourhood.



U R B A N
M A T

STRATEGY

