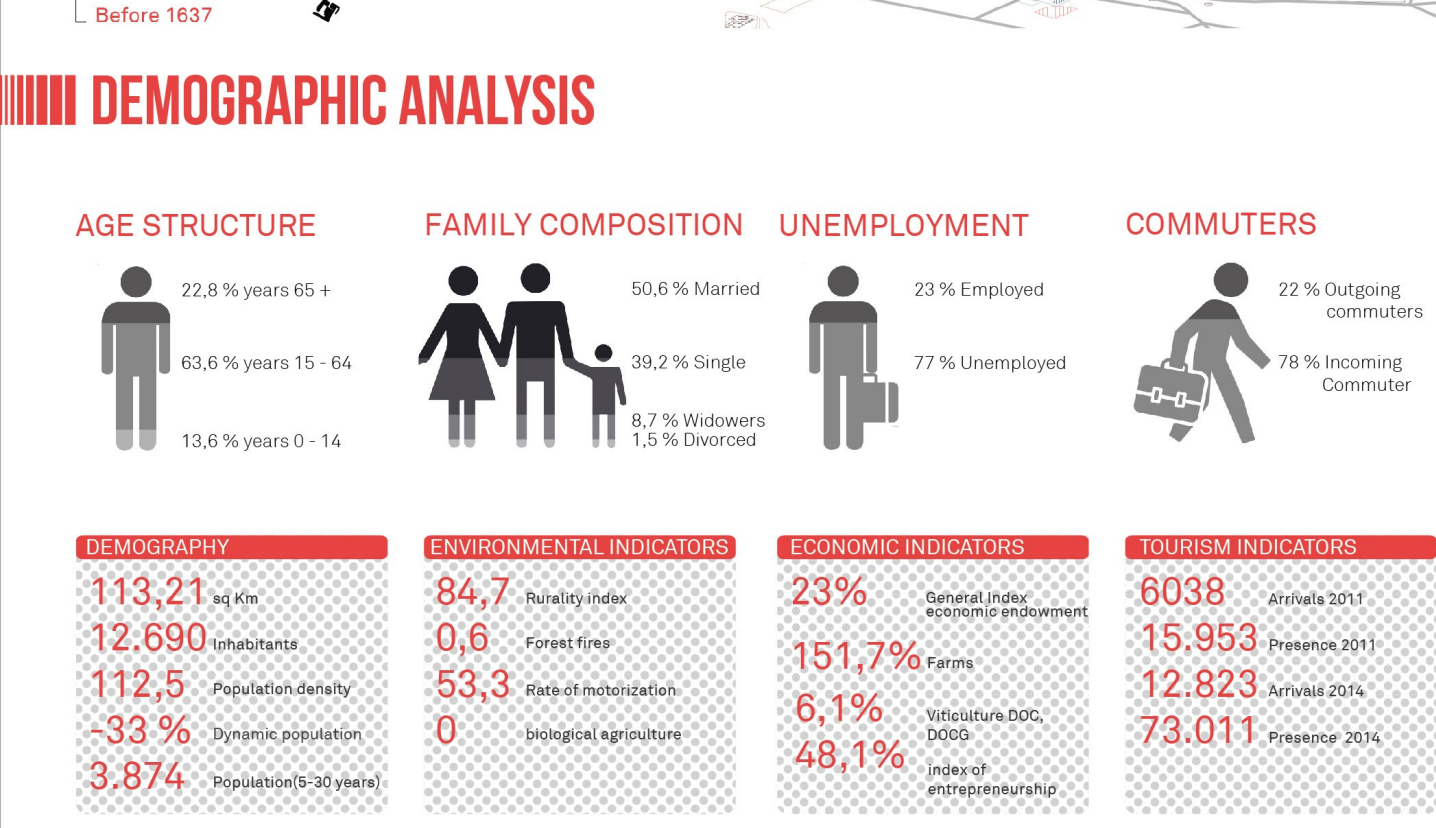
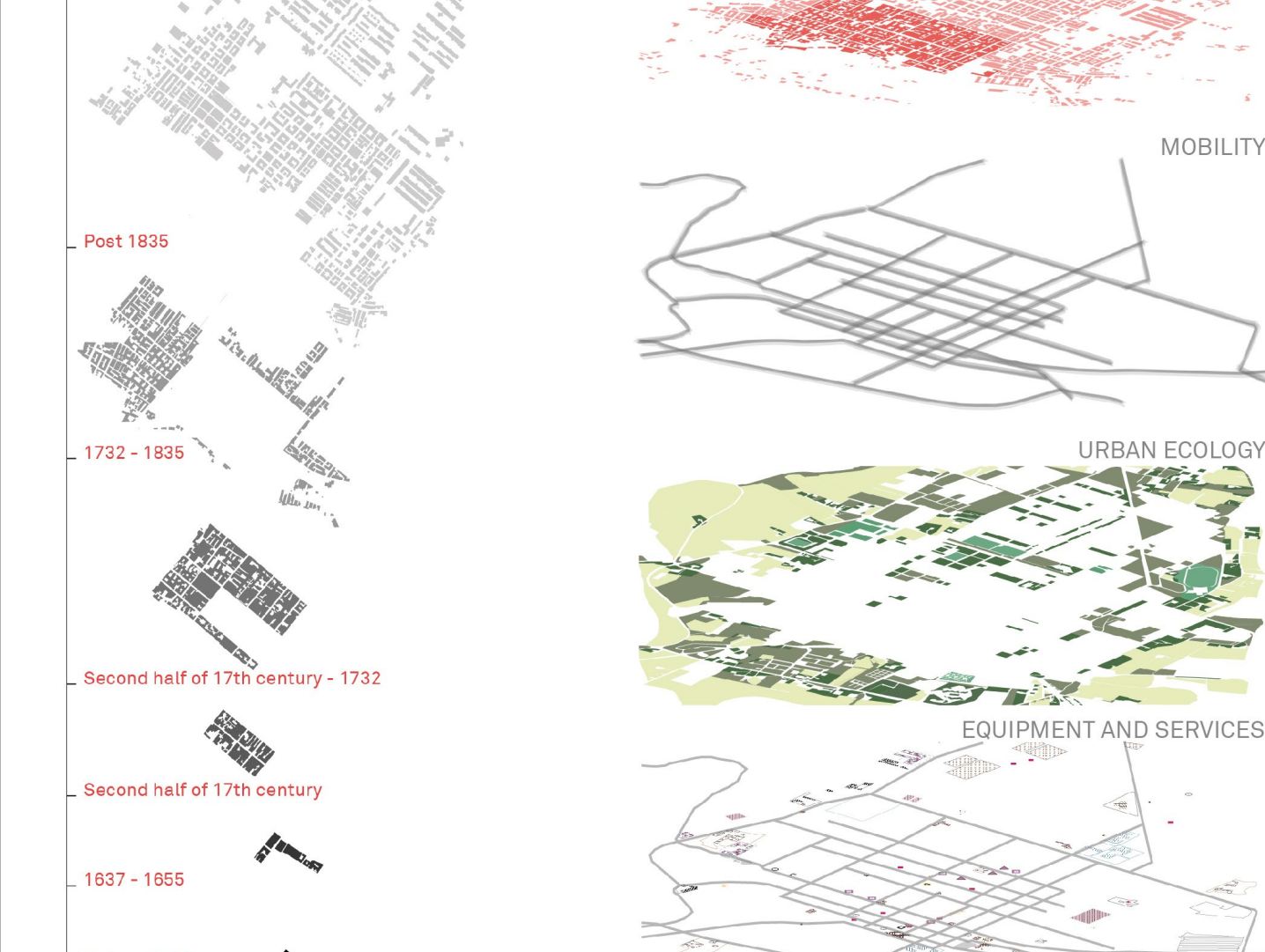
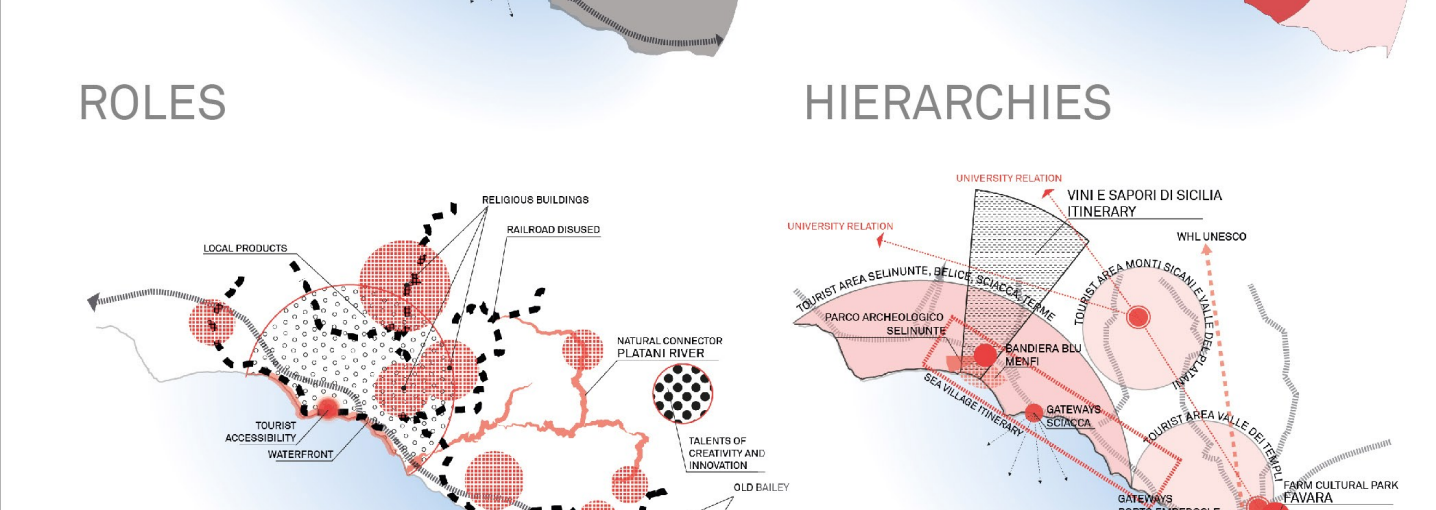
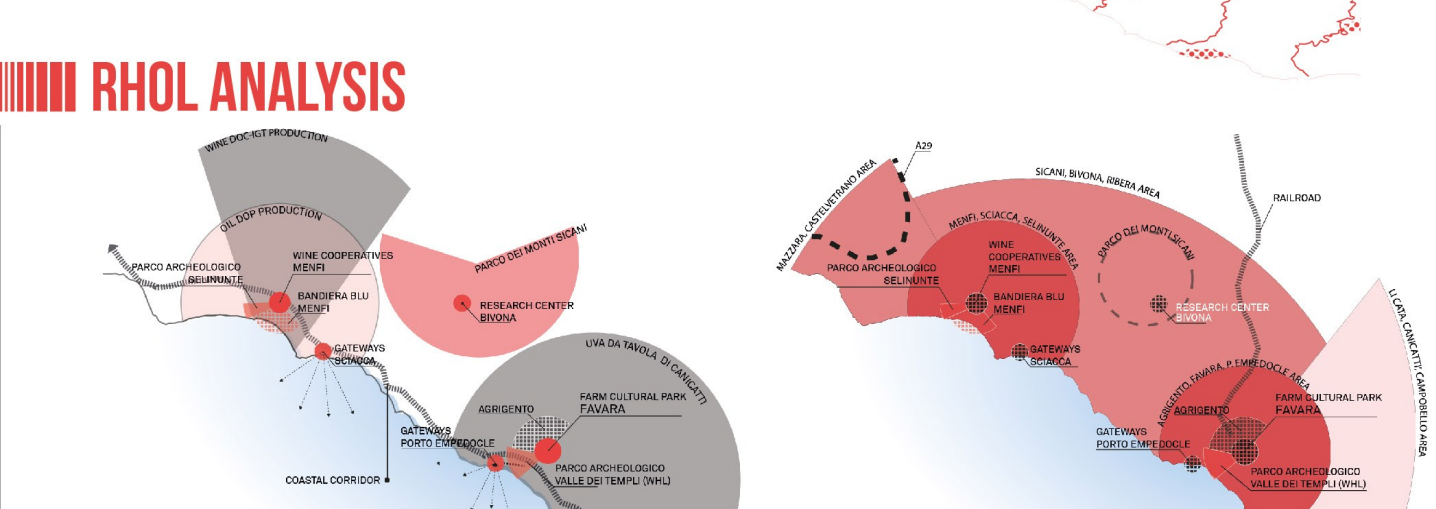
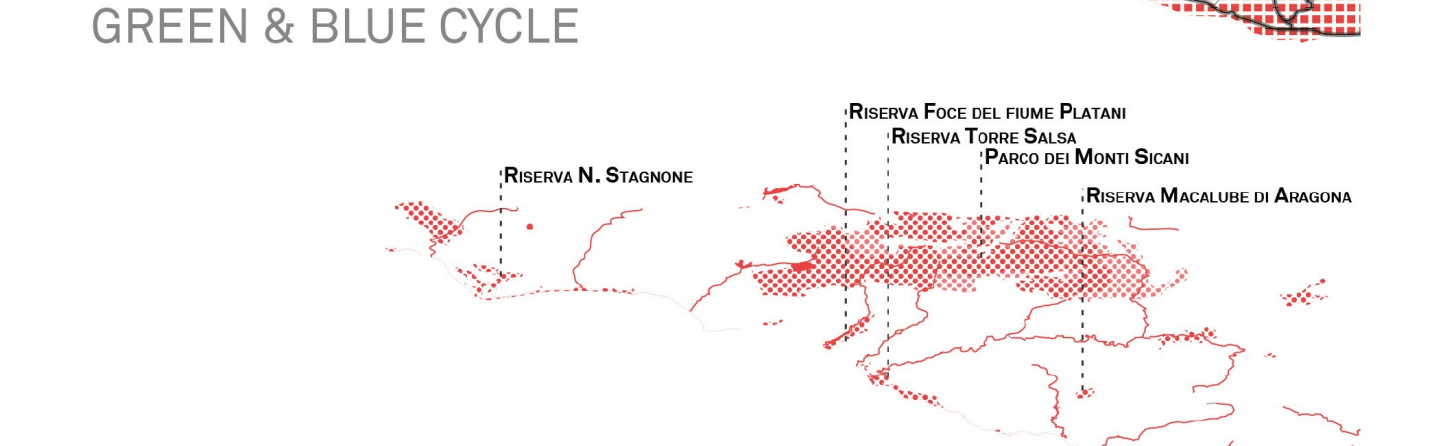
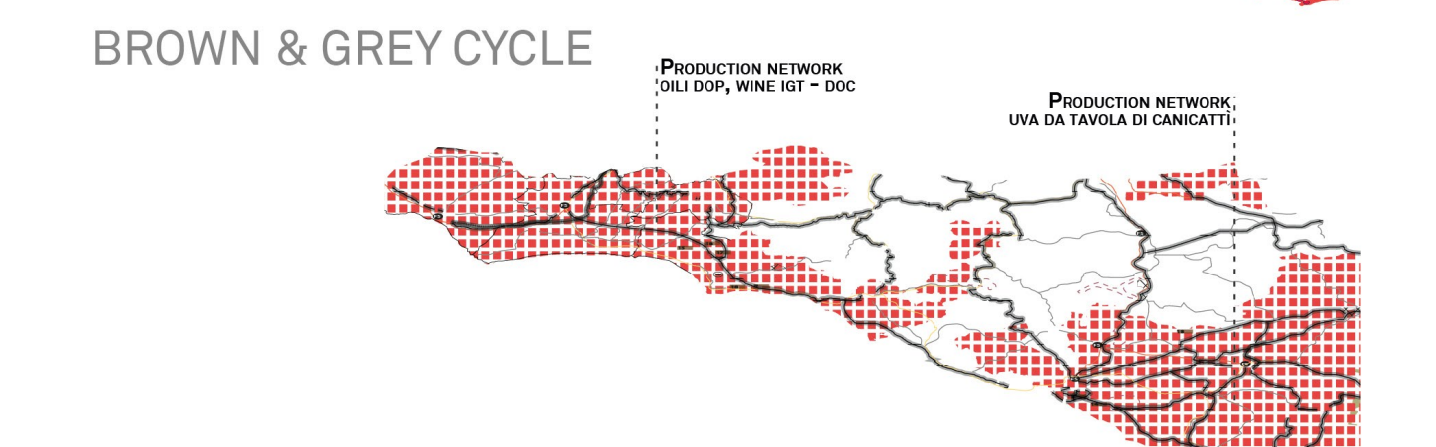
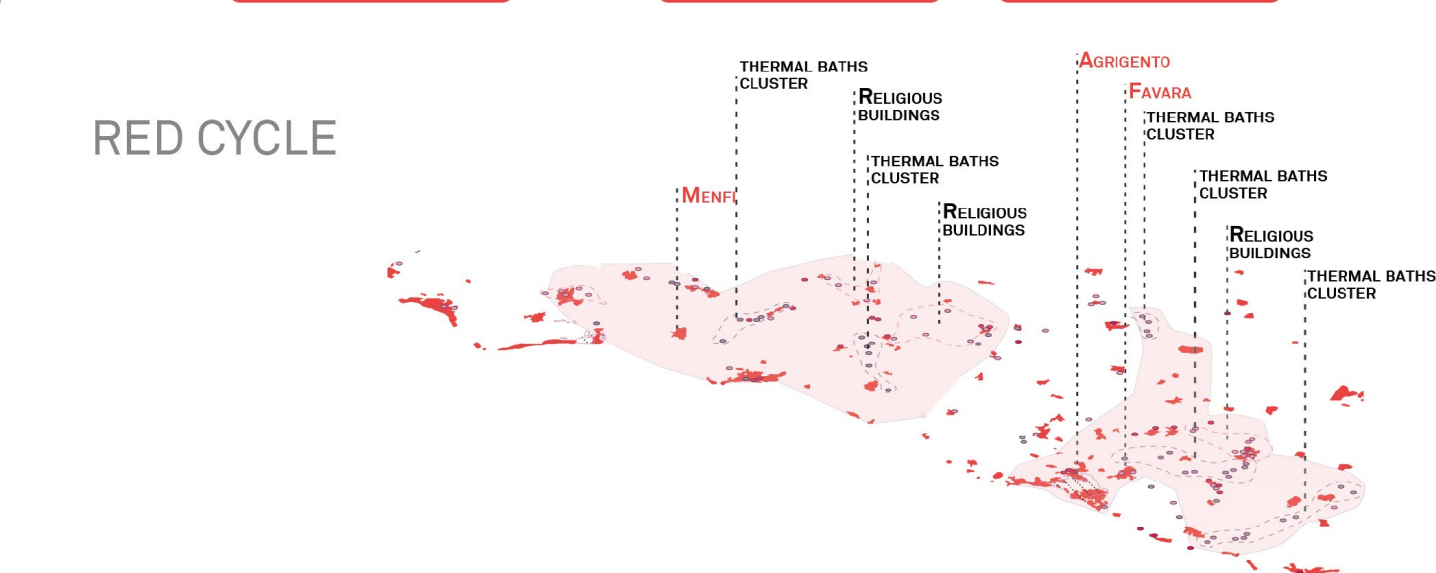
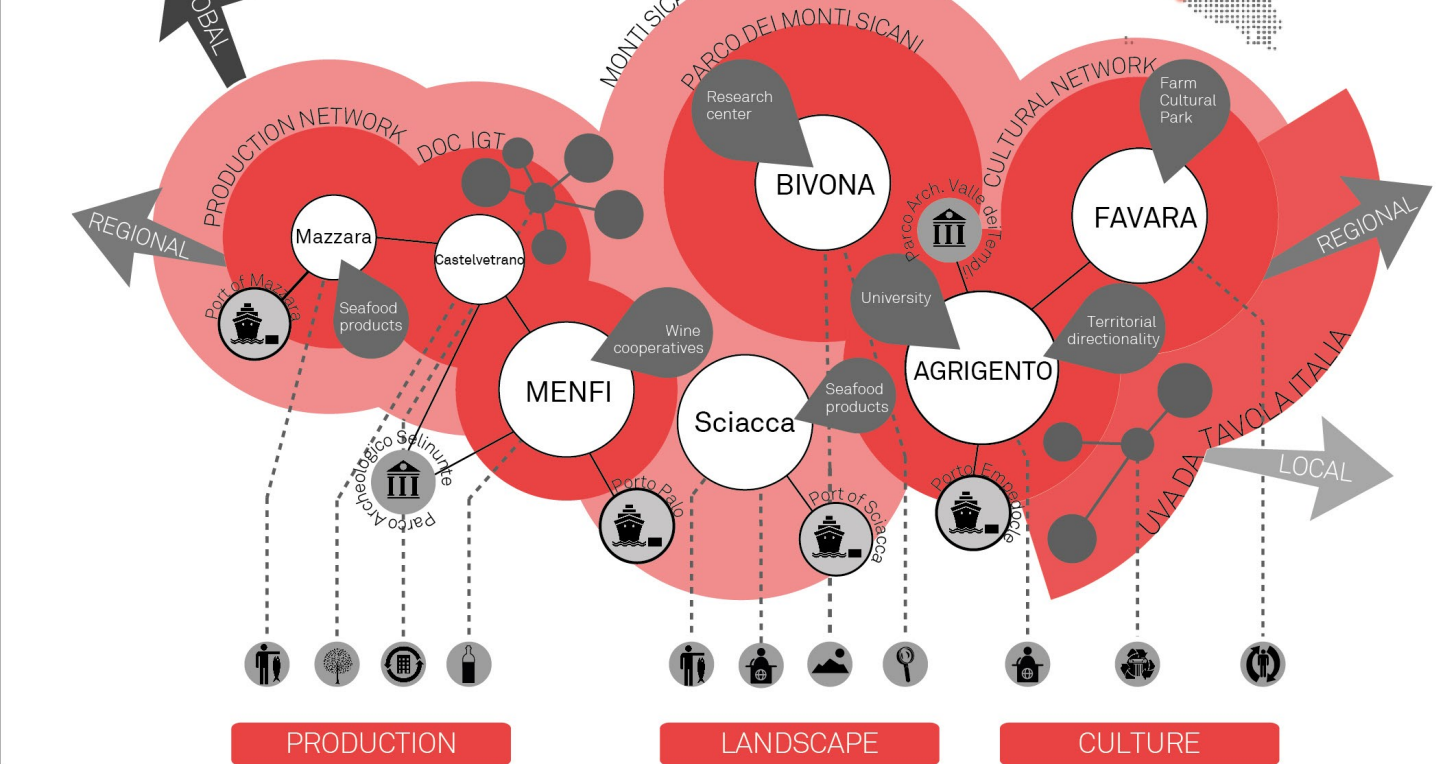


RUR-URBAN

HYPERTERMETABOLISM

New Life Cycles for the city of MENFI

University of Palermo, Polytechnic School, Department of Architecture
 (Prof. Maurizio Carta)
 Student: Cosimo Camarda, Flaminia D'Amaro

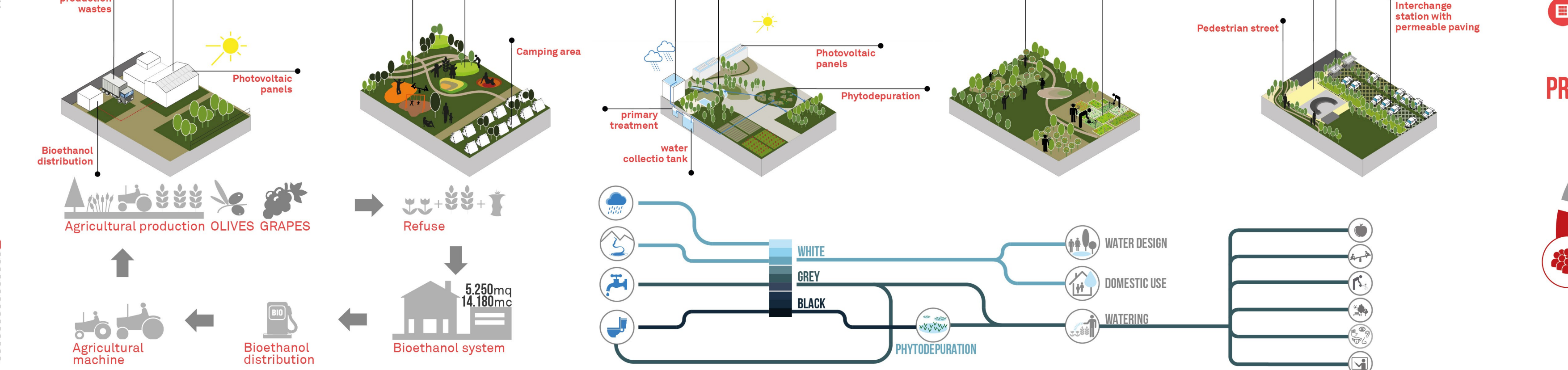
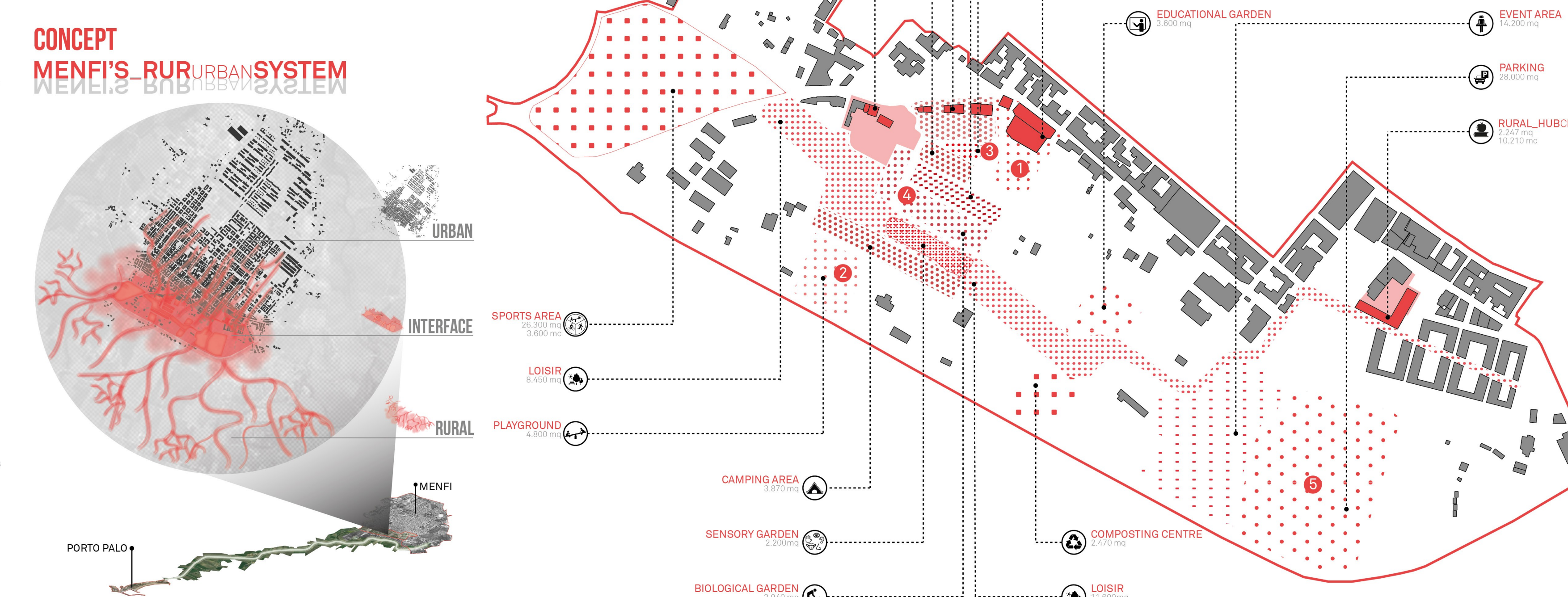


#Vision. The medium/small city and the contemporary urban settlements are places in transformation that starting from the territorial capital, within a territorial archipelago, can become "peripheral centrality" with the dual objective of urban regeneration and territorial balance and competitiveness based on local specificities.

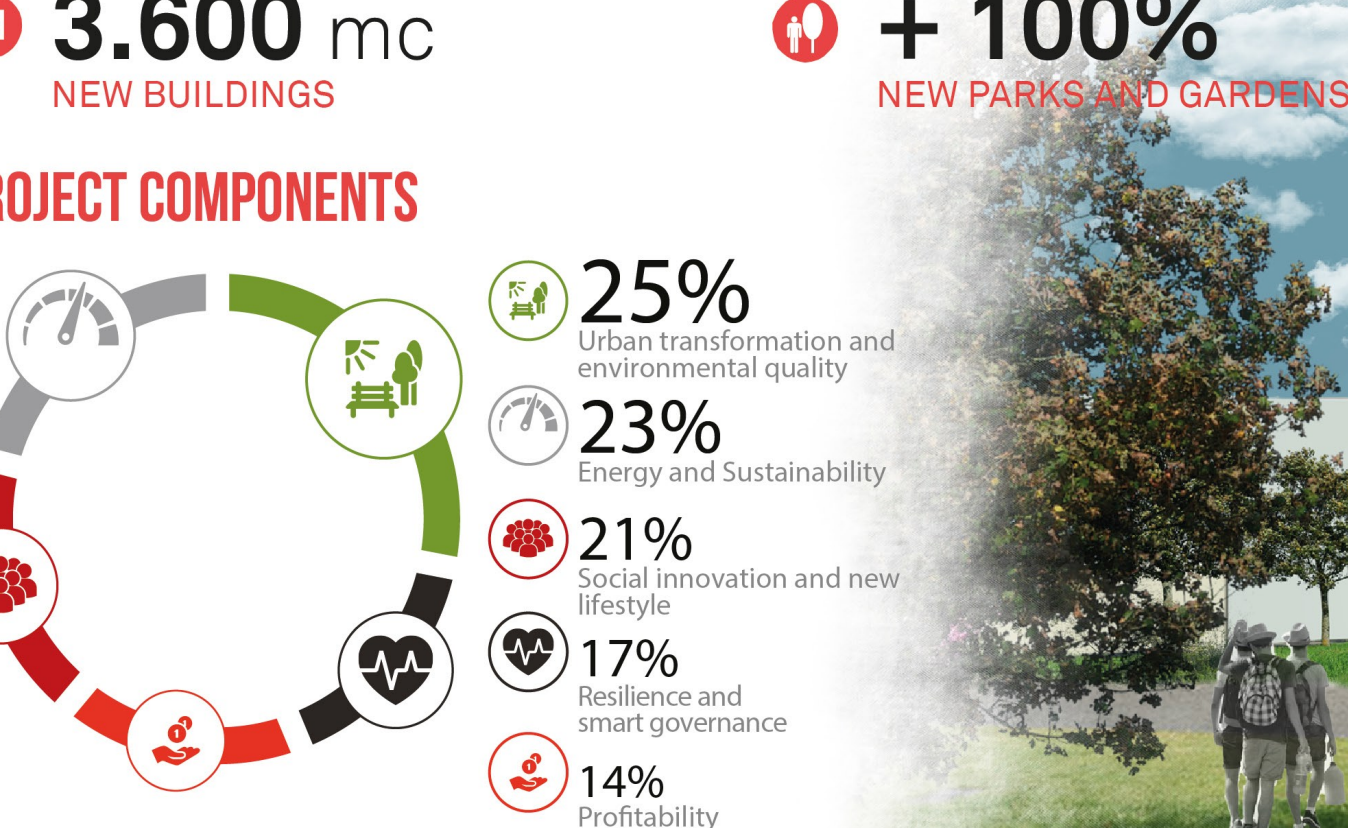
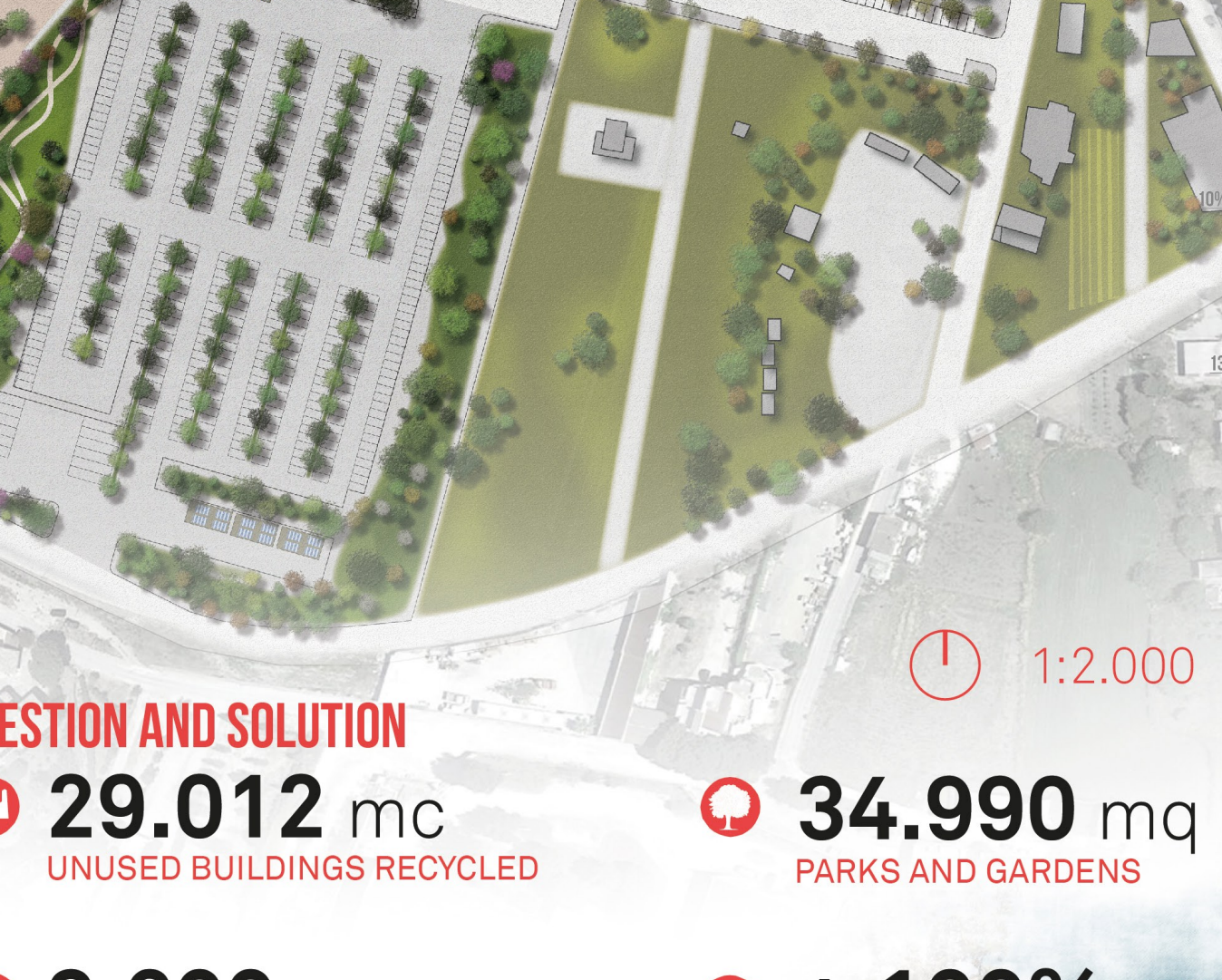
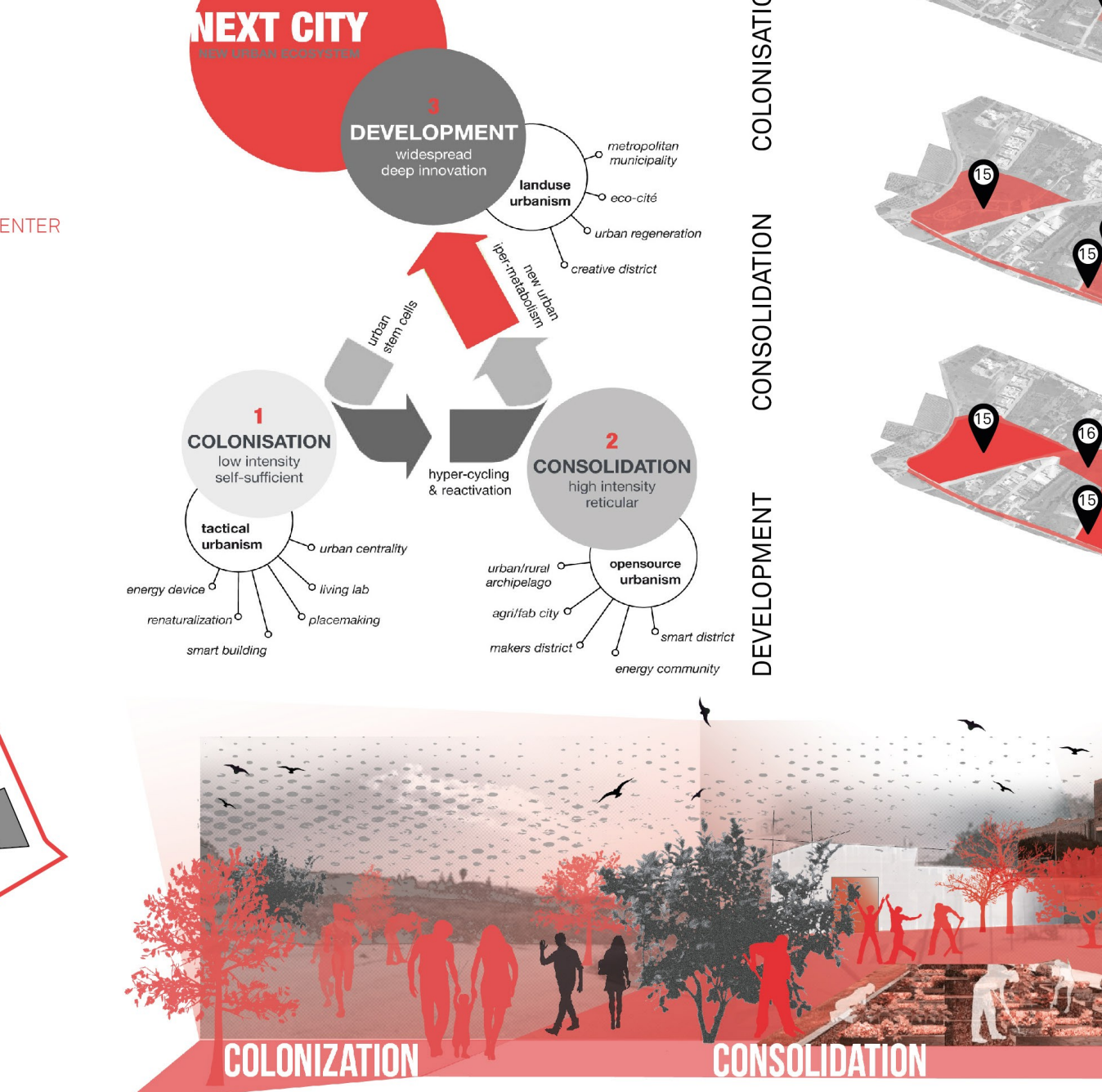
The rur-urban settlements constitute resilience reserves where reactivate a creative, intelligent and ecological metabolism.

#Mission. Starting from creative and innovative capital of rur-urban areas based on culture, communication, cooperation, energy, new manufacturing and sustainable mobility, capable of producing images of innovative regeneration that looks of the project, through the activation of new life cycles for city places waiting for new uses because marginal, abandoned, disused, non-places.

#Action. Starting from a sub-regional vision with the identification of the territorial archipelago of Menfi-Favara-Monti Sicani, the project aims to regenerate able to integrate the dimension of economic sustainability and the public-private partnership with the challenge for more creative, ecological and intelligent rur-urban areas. In this context it's applied the Smart Land principle and the Re-think, Re-load, Re-cycle paradigm. It's planned new scenarios for development and reactivation of rur-urban areas through synergies between urban planning and design (in terms of ecological, economic and cultural sustainability) to build an intelligent, sustainable and inclusive territory where through common and shared policies will increase local competitiveness, social cohesion, knowledge, creativity, accessibility, the ability of the environment (natural, historical and architectural, urban and widespread) and landscape and citizens life quality.



ZONING
 Place as a hinge between two different identities, cities and territory. Rur-urban interface, consists of several parts with many different functions (Sports Area, Loisir, playground, camping area, sensory garden, educational garden, edible garden, agro-food, biological garden, composting center, event area, photodepuration, marketplace). It takes the role of urban gateway, engine of new activities to be replicated as opportunities for social, economic and urban regeneration. The urban regeneration project involves some strategic areas identified by municipal administration using an adaptive approach: typical of the city forming protocol, the land design respects, where possible, the original geometries of the areas, while in some cases have been modified to create a connection system with the context.



COLONISATION... some functions are located to act as "oxygen reservoir" for the formation of new urban atmosphere. The colonies are like "urban stem cells" that work as new urbanity activators (ecological crisis of naturalization, energy plug-in devices, low cost and smart blocks, living labs and micro-production for digital, manufacturing, redevelopment of public spaces, etc).

CONSOLIDATION... phase acts on the new and in development ecosystem inserting some of most valuable and powerful feature functions especially from the point of view of the generation of social and economic profits and values. Ecological and smart neighbourhoods, makers districts and innovative communities, green manufacturing and attractors of new urban archipelago of infrastructural, gateway act through hyper-cycling process that activates several cycles for more attractive and productive functions.

DEVELOPMENT... is a long term phase, in which the new metabolism of the area is activated to generate the creation of new urban value. In this phase, an adaptive metropolitan can be drawn up. It is able to get investment with a high multiplier of growth strength and to support the substantial investments required for the complete transformation of the area.

