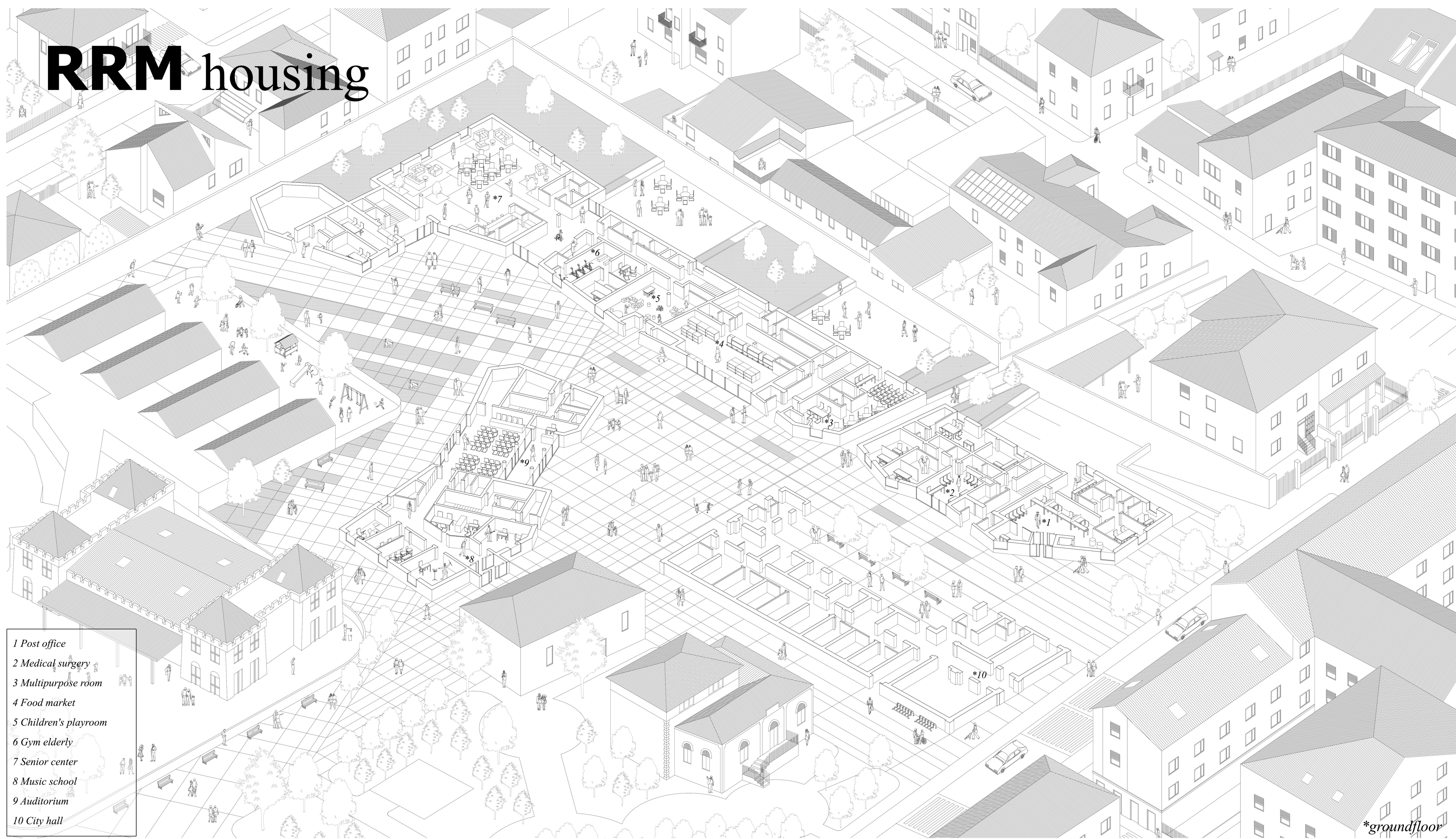


RRM housing

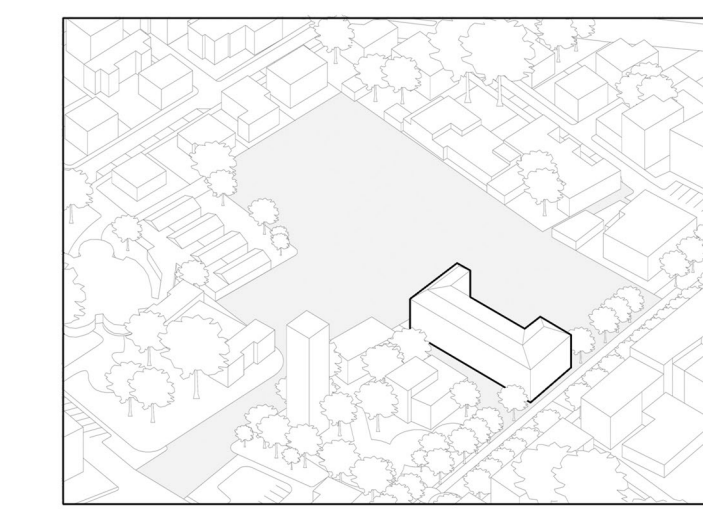
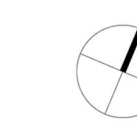


- 1 Post office
- 2 Medical surgery
- 3 Multipurpose room
- 4 Food market
- 5 Children's playroom
- 6 Gym elderly
- 7 Senior center
- 8 Music school
- 9 Auditorium
- 10 City hall

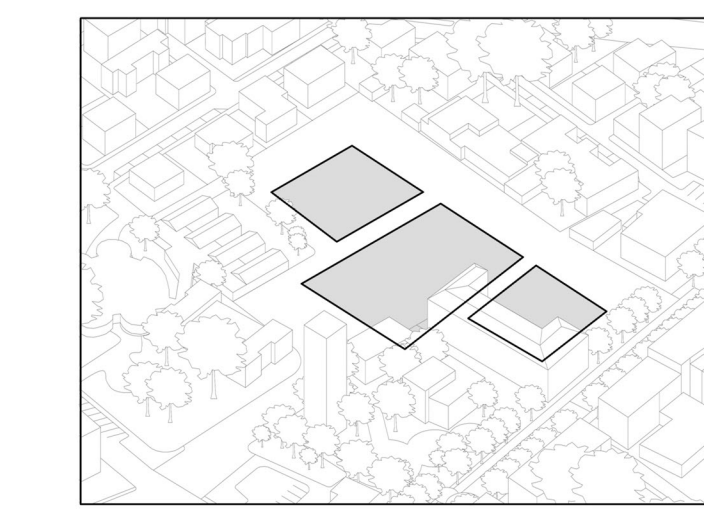
*groundfloor



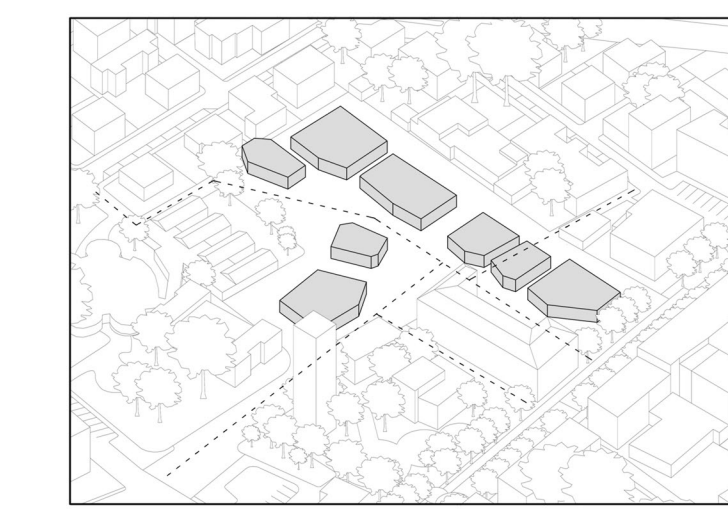
masterplan - 1:1000



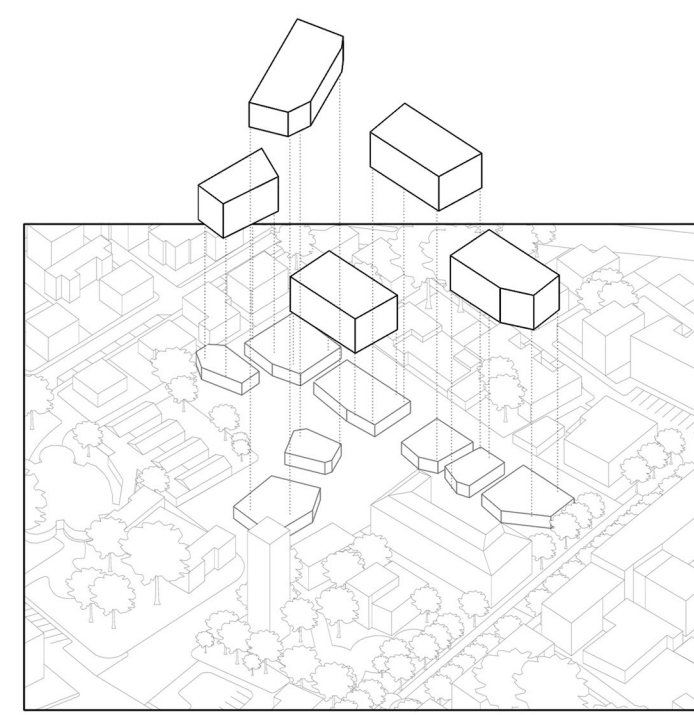
current situation



open space sequence



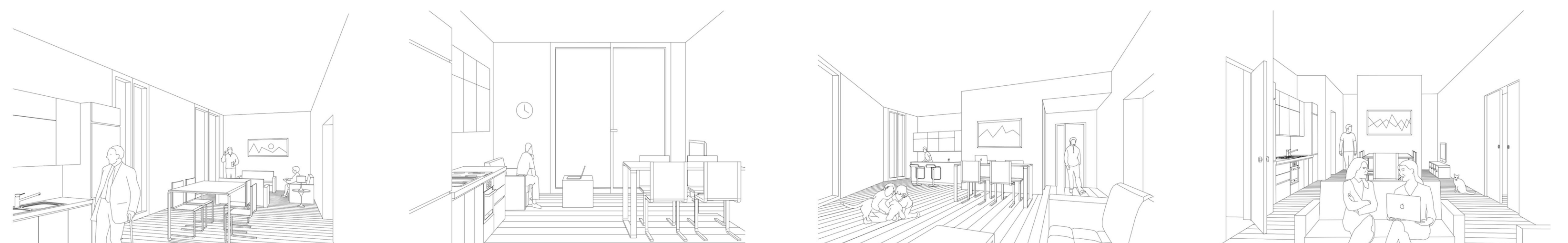
basement system



floating volumes



typical floor plan - 1:250

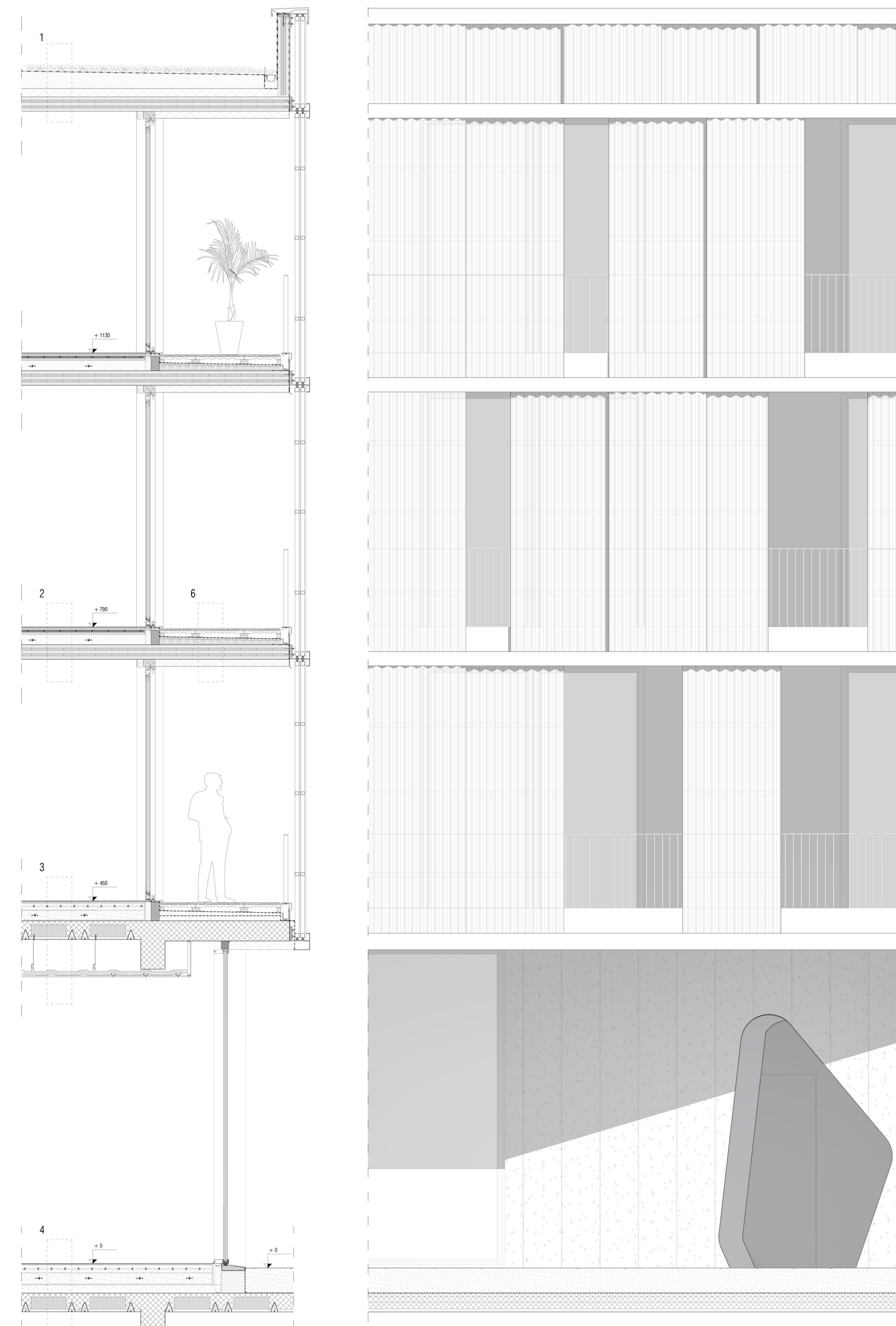


- elders cluster -

- 2 rooms -

- 3 rooms -

- 4 rooms -



facade detail - 1:50

- | | | | |
|--|---|---|--|
| <p>1 - Roof</p> <ul style="list-style-type: none"> -Gravel -Waterproofing membrane -Concrete screed -TNT synthetic material -Wood wool insulating panel -Vapour barrier -X-lam cross laminated timber | <p>2 - Intermediate Floor</p> <ul style="list-style-type: none"> -Finishing panels -Bonding layer for parquet -Radiant floor system -Polystyrene thermal insulation -Foundation insulation -Bearing panels gypsum fiber -Lightweight screed with acoustic insulation panels -X-lam cross laminated timber | <p>3,4 - Floor</p> <ul style="list-style-type: none"> -Finishing panels -Radiant floor system -Polystyrene thermal insulation -Lightweight screed with thermal insulation panels -Reinforced concrete with composite floor | <p>6 - Balcony</p> <ul style="list-style-type: none"> -Floating floor -Waterproofing membrane -Wooden flooring -Wooden boards -X-lam cross laminated timber |
|--|---|---|--|



reconnect revitalize multiplicity
 * riconnesso * rivitalizzare * molteplicità

RRM housing is a residential complex which aims to recover an important part of the urban fabric of Locate Triulzi, by using key elements that guided the design process.

Reconnect: the particular project area has elements to be valorized but also important critical issues. The proximity of the city hall and schools, the closed lot and the distances to the existing buildings to respect. The design approach has been guided by the design of the public open space. There is a sequence of spaces with the aim to reconnect the area to the town: a little square inside the city hall's courtyard, the main square and gardens for the elderly.

Revitalize: diversification of public functions on the ground floor, the succession of spaces with different functions: post office, medical surgery, food store, music school, playful environments for children and adults and a senior center, open to all citizens.

Multiplicity: different type of apartments and the new shared service spaces for the collective, both affiliated to the residence for the elderly. The elderly are integrated into a system of socialization with appropriate internal and external spaces. Accommodations supervised to ensure security and management.